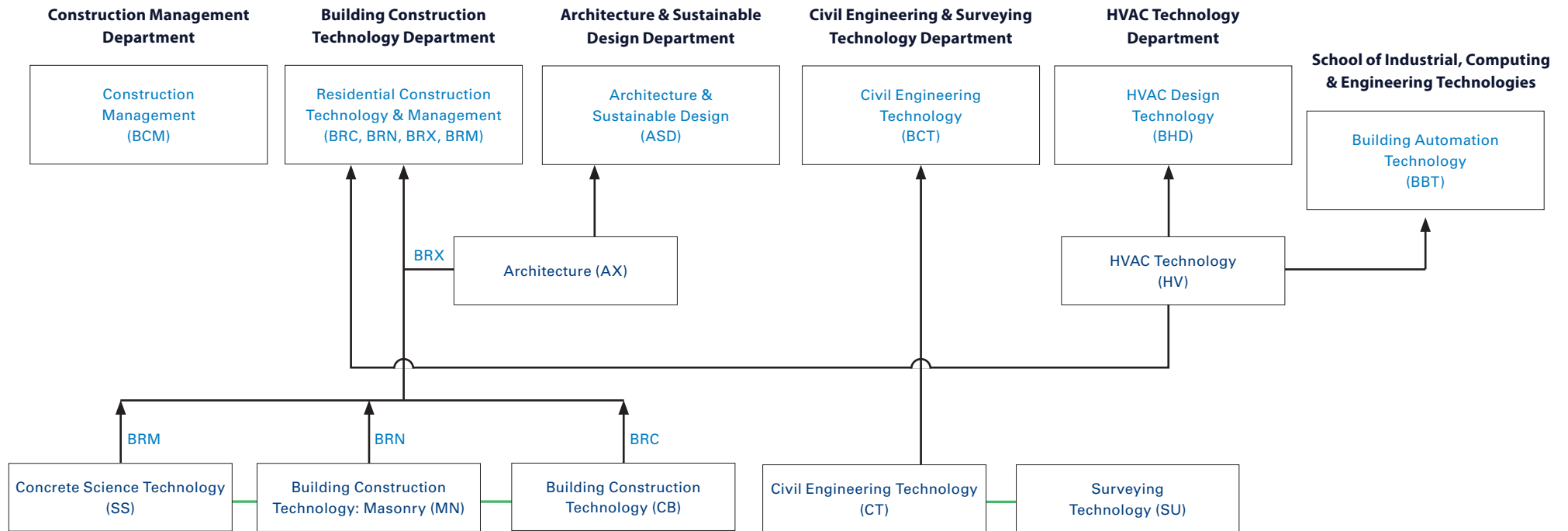




## Construction & Design Technologies Degree Opportunities



**TYPES OF DEGREES**  
 Bachelor's Degrees  
 Associate's Degrees  
 Dual Degree Options\* —  
 \*contact school office for more details

**Minors:**  
 Architecture (MAT)  
 Sustainable Design (MSD)

**Students can complete the following two associate's degrees in reduced time:**

Building Construction Technology (CB)	Concrete Science Technology (SS)	6 semesters
Building Construction Technology (CB)	Masonry (MN)	5 semesters
Civil Engineering Technology (CT)	Surveying Technology (SU)	6 semesters